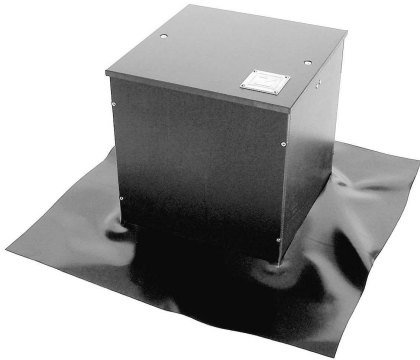


# Product Data Sheet

## Inspection Chamber KS 30-PE

Order No. 4033



Inspection chamber to secure the inspection of roof outlets or other components within intensive green roof build-ups.

### Technical Data

#### Inspection Chamber KS 30

Order No. 4033

Made of 100% polyethylene, UV resistant, with solid, lockable cover and load distributing plates.

Height:	ca. 300 mm
Dimensions:	ca. 300 x 300 mm
Weight:	ca. 6.0 kg
Colour:	black



#### Accessories for KS 30:

##### Extension piece

Order No. 4016

Made of 100% polyethylene, for the extension of the Inspection Chamber KS 30-PE and Irrigation Unit B 32 in segments.

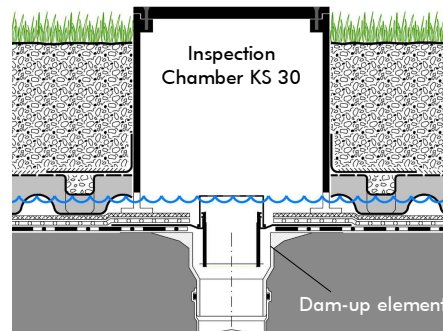
Height:	ca. 150 mm
Weight:	ca. 2.0 kg

### Features

- suitable for green roof system build-ups up to 300 mm in height
- extension pieces for vertical adjustment in segments
- 100% polyethylene
- with load-distributing support plates
- footstep stability Class K according to German Standard DIN 19599
- solid, detachable cover, lockable
- with PE sheet collar for consistent filter sheet connection

### Application Example

#### System "Roof Garden"



- Plant layer
- System Substrate "Roof Garden"
- Filter Sheet SF  
Floradrain® FD 60, infilled with Zincolit® Plus
- Protection Mat ISM 50
- Roof construction with root resistant waterproofing

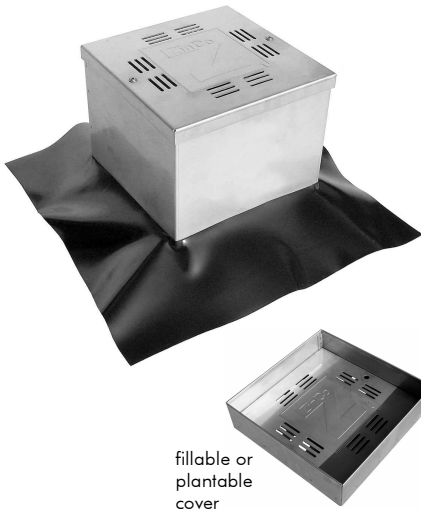
### Specification Suggestion

Inspection chamber made of 100% polyethylene; with detachable cover and load distributing support plates, dimensions ca. 300 x 300 mm, height ca. 300 mm, weight ca. 6 kg, colour black, delivery and installation

according to manufacturer's instructions.

Make: ZinCo Inspection Chamber KS 30-PE  
Enquiries: ZinCo Canada Inc  
Phone: 1-905-690-1661

## Inspection Chamber KS 30 Stainless Steel



Inspection chamber of high-quality stainless steel for protection and inspection of roof outlets in intensive green roofs.

### Technical Data

#### Inspection Chamber KS 30

Order No. 4035

Stainless steel, lockable; with stable, slotted and walkable cover; load-distributing support surface, with lateral slots for the absorption of drainage water, incl. PE sheet collar.

Height: ca. 300 mm  
 Dimensions: ca. 300 x 300 mm  
 Weight: ca. 8.0 kg

Order No. 4038 comes with a fillable or plantable cover. The total height is 360 mm.

#### Accessories for KS 30-E:

##### Extension Piece

Order No. 4036

Stainless steel, for extension of the Inspection Chamber KS 30 in segments.

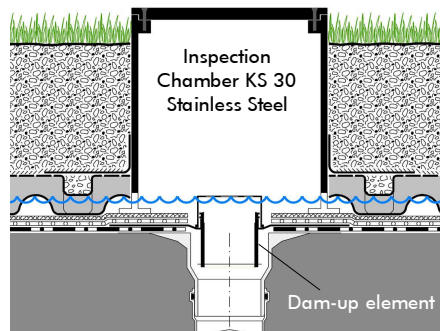
Height: ca. 150 mm  
 Weight: ca. 3.0 kg

### Features

- suitable for green roof system build-ups up to 300 mm in height
- extension pieces for vertical adjustment in segments
- walkable
- high-quality stainless steel
- with pressure distributing support surfaces
- solid detachable cover, lockable
- also with fillable or plantable cover
- with PE sheet collar for consistent filter sheet connection

### Application Example

#### "Roof Garden"



Plant layer  
 System Substrate "Roof Garden"  
 Filter Sheet SF  
 Floradrain® FD 60, infilled with Zincolit® Plus  
 Protection Mat ISM 50  
 Roof construction with root resistant waterproofing

### Specification Suggestion

Inspection chamber of stainless steel; with walkable slotted cover, load-distributing support surfaces and lateral perforation, dimensions ca. 300 x 300 mm, height ca. 300 mm, weight ca. 8 kg, delivery and installation according to

manufacturer instructions.

Make: ZinCo Inspection Chamber KS 30 Stainless Steel  
 Enquiries: ZinCo Canada Inc  
 Phone: +1-905-690-1661