

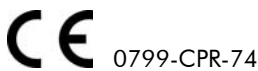
# Product Data Sheet

## Filter Sheet PV

Order No. 2131



Thermally strengthened filter sheet of PP, highly resistant to mechanical stress, applicable especially on Elastodrain® EL 202 and Protectodrain® PD 250 under driveways.



### Technical Data

#### Filter Sheet PV

Thermally strengthened, UV-stabilized filter sheet made of 100 % polypropylene, highly resistant to mechanical stress.

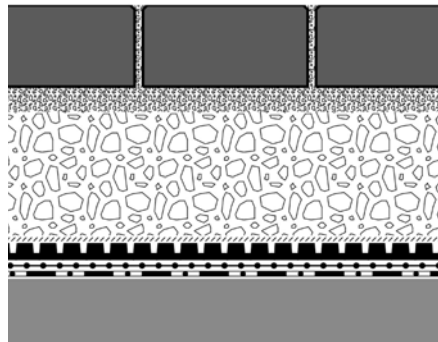
Thickness:	ca. 1.60 mm
Weight:	ca. 300 g/m <sup>2</sup>
Colour:	grey
Penetration force according to EN ISO 12236:	ca. 4300 N
Strength class:	5
Tensile strength (200 mm) according to EN ISO 10319 lengthwise/crosswise:	ca. 23.0 kN/m
Tensile extension lengthwise/crosswise:	ca. 50% / 55%
Flow rate (H <sub>50</sub> ) according to EN ISO 11058:	ca. 30 l/(m <sup>2</sup> ·s) (≅ 0,030 m/s)
Effective opening width (O <sub>90</sub> ) according to EN ISO 12956:	ca. 65 µm
Dimensions:	
Roll width:	ca. 2.00 m
Roll length:	ca. 50.00 m

### Features

- highly resistant against mechanical stress
- very high tensile strength
- resistant to all naturally occurring acids and alkali
- chemically and biologically neutral
- high passage of water
- quick and easy installation
- non-rotting

### Application Example

#### "Driveway on Elastodrain®"



Concrete pavers  
 Stone chippings  
 Crushed gravel base layer  
 Filter Sheet PV  
 Elastodrain® EL 202  
 Separation and Slip Sheet TGF 20  
 Roof construction with root resistant waterproofing

### Specification Suggestion

Thermally strengthened sheet of polypropylene; weight ca. 300 g/m<sup>2</sup>, penetration force according to EN ISO 12236: ca. 4300 N, strength class 5, flow rate (H<sub>50</sub>) according to EN ISO 11058: ca. 30 l/(m<sup>2</sup>·s), effective opening width

(O<sub>90</sub>) according to EN ISO 12956: ca. 65 µm, delivery and installation.

Make: ZinCo Filter Sheet PV  
 Enquiries: ZinCo GmbH,  
 Phone: +49/7022/6003-0