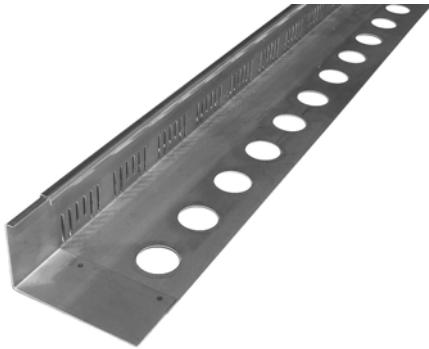


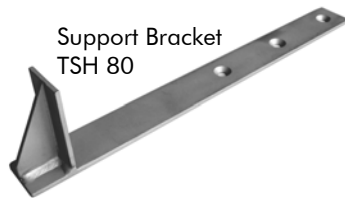
Product Data Sheet

Eaves Profile TRP 80

Order No. 7780



Heavy-duty angle profile made of stainless steel with drainage slots and perforation in the support leg for fixation onto the waterproofing.



Support Bracket
TSH 80

Technical Data

Eaves Profile TRP 80

Heavy-duty angle profile made of stainless steel for the edge of walkways, as shear barriers in pitched green roofs (in combination with support brackets). Also to be used as edging in case of missing upstands. Slots in vertical leg for drainage, perforation in support leg for fixing purposes.

Material:	stainless steel
Material thickness:	ca. 1.5 mm
Length:	ca. 3.0 m
Profile height:	ca. 80 mm
Width of support leg:	ca. 140 mm

Attached butt joint

Accessories:

- Prefabricated corners

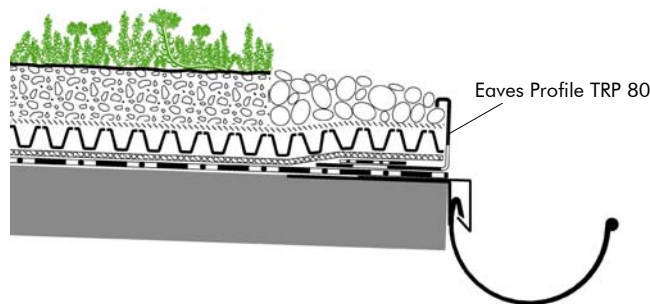
Custom design up on request

Features

- can be fixed onto the waterproofing without any penetration
- edging and enclosure on walkways
- secure eaves edge for external drainage gutter
- as shear barrier on pitched roofs
- incl. welded butt joints for straight lined edges
- neutral and especially corrosion resistant

Application Example

"Roof edge with gutter"



Specification Suggestion

Heavy-duty angle profile made of stainless steel; material thickness ca. 1.5 mm, with drainage slots for water run-off, delivery and installation according to manufacturer's instructions, incl. butt joints and prefabricated corners,

profile height ca. 80 mm, width of support leg ca. 140 mm.

Make: ZinCo Eaves Profile TRP 80
Enquiries: ZinCo GmbH,
Phone: +49 7022 6003-0